

THE BEAM User Manual

Version 2.0



www.joinbeam.com

What's In The Manual

- What is included with your system
- Installation requirements
- Getting ready to play
- Keyboard controls
- Volume controls
- Setup your games to be played
- Launch playlist
- Connect to the wireless internet
- System schedule
- Event editor (not available in all packages)
- Troubleshooting



What's Included?

- Remote for controlling the projector
- Keyboard for operating the EyeClick Admin Manager
- The BEAM system

If the remote or the keyboard is not responding please check to make sure the batteries are fresh. Always remember to turn the keyboard off when you are not using it to prevent the batteries from wearing out.



Getting Ready To Play

Grab your remote control and keyboard

Ensure your keyboard is on with the on/off switch

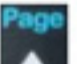
The games should now be projected on the floor or table, otherwise you will see the Admin control panel

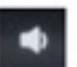



Keyboard Controls

ctrl + Q: exit games and return to Admin control panel

ctrl + L: show playlist of games

  previous or next game in play list

  sound for the system is controlled using the speaker keys on the keyboard

 turn off the sound with the mute key on the keyboard



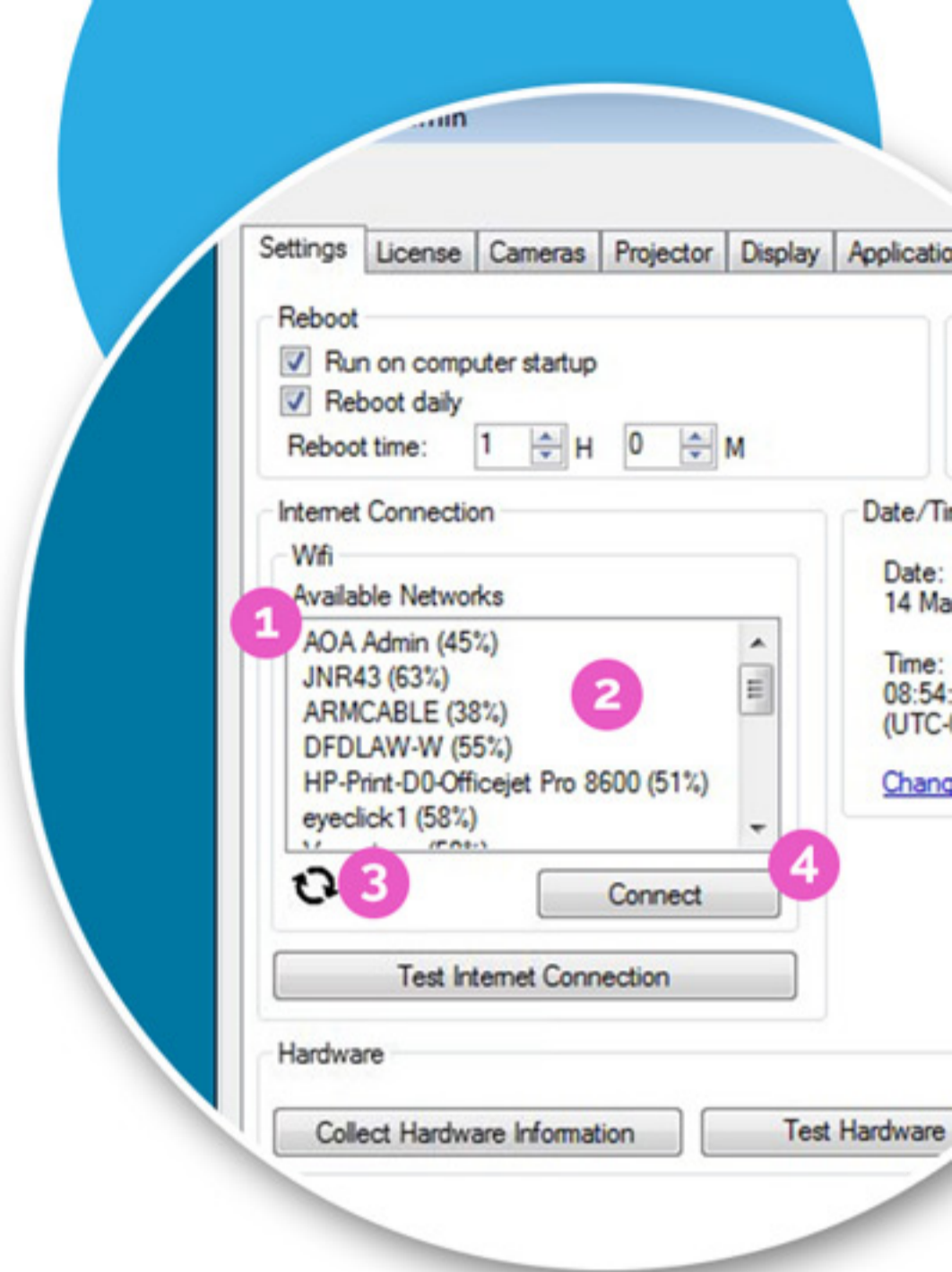


Setting Up Your Games

- 1) A list of all installed games on your BEAM
- 2) Click (or press ctrl for multiple) to select games to add to a playlist
- 3) Enter the duration, in seconds, for the games being added to the playlist
- 4) Click the add button to add games
- 5) To play a single game, click the game then click the set button
- 6) Use the arrow buttons to change the order of the games in the play list
- 7) Use the X or bucket button to delete a single or all games
- 8) Save the current playlist
- 9) Load an existing saved playlist
- 10) Save all the changes made in the admin control panel
- 11) Exit without saving any changes made in the admin control panel
- 12) Close the admin control panel and launch the current playlist

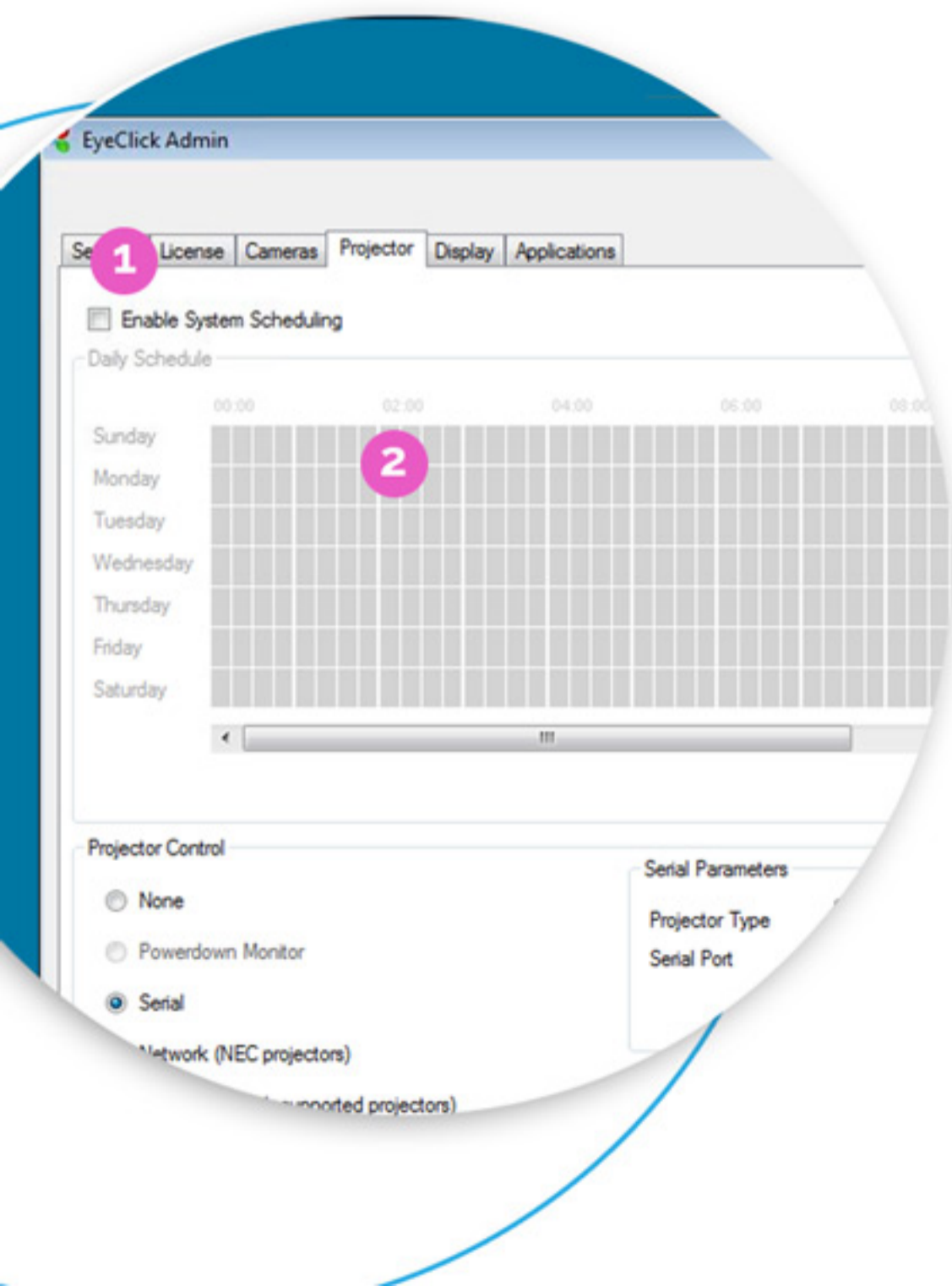
Connecting To Your Wireless

- 1) View the available wireless networks
- 2) Select your wireless network from the queue
- 3) If you don't see your network, click the refresh button to refresh the queue
- 4) Click connect and enter your password



Schedule The Timer

- 1) To set the automatic time, check the "Enable System Scheduling" checkbox
 - 2.1) Select the days and times you want your BEAM to be on
 - 2.2) The blocks of time are in 15 minute increments
 - 2.3) Left click to select a 15 minute increment or right click to deselect a time period
 - 2.4) Press ctrl and drag (Left/Right) the mouse button to select multiple increments



Troubleshooting

I do not see the image projecting:

1. Turn the keyboard On and press Ctrl + Q
2. Wait for the projector to turn on. If the projector does not turn on, point the projector's remote at the mirror and press the power button
3. Check that the system is not set to be switched off via the scheduler at the "Projector" Tab
4. Change the scheduler setting and launch games at the "Applications" tab

I do not hear the sound:

1. Adjust volume level by using keyboard sound controllers

I want to the turn sound off:

1. Mute sound by using keyboard "Mute" button

The keyboard is not working:

1. Make sure the keyboard is powered on by switching the on/off button located on the upper angle of the keyboard
2. Replace the batteries on the back of the keyboard if needed



EyeClick Customer Support
support@eyeclick.com
914-219-0279
joinBEAM.com/help